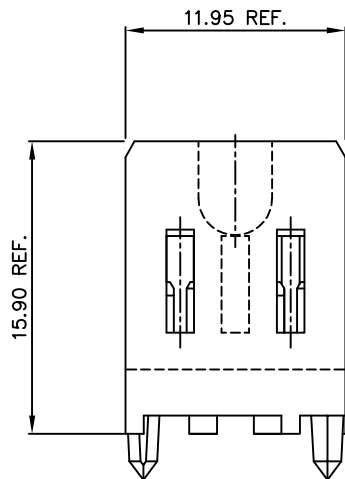
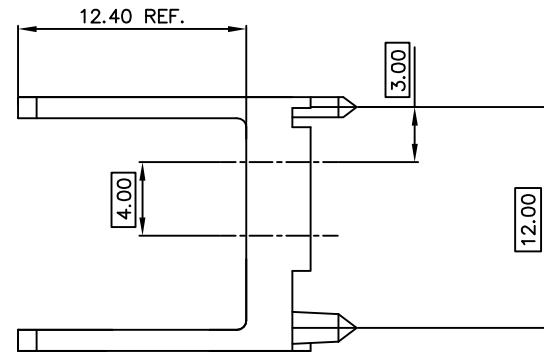
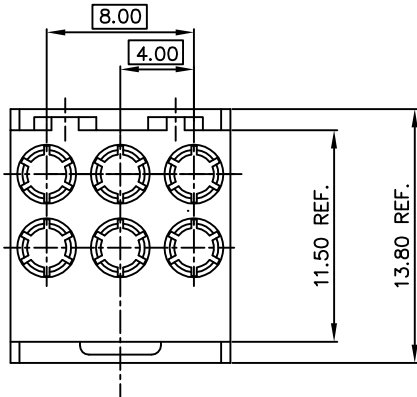


PRODUCT NO. 70243-101LF  
70243-111LF

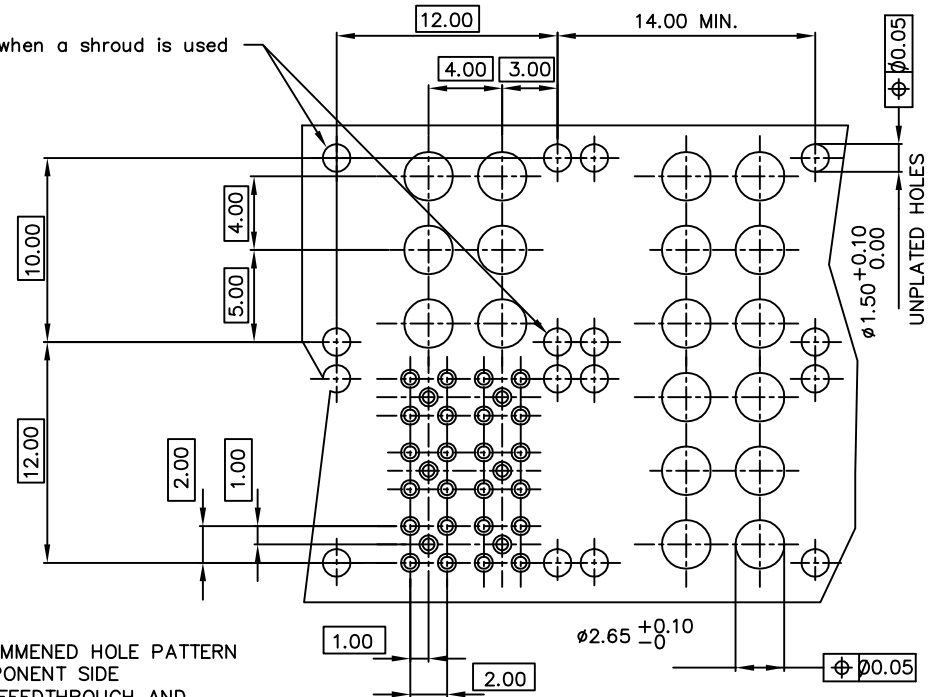


NOTE:  
1) MATERIAL:  
LIQUID CRYSTAL POLYMER  
30% GLASS.  
FLAME RETARDANT ACC. UL 94-V0  
COLOR NATURAL.

2) WHEN USING THIS PRODUCT IN A STRAIGHT TO BOARD APPLICATION THE FOLLOWING MUST BE TAKEN INTO ACCOUNT.  
-101LF HOUSING IS TO BE USED FOR THE SOLDER TO BOARD INSERT 88980-00Z.  
-111LF HOUSING IS TO BE USED FOR THE PRESS-FIT TO BOARD INSERT 88978-001.

3) THIS PRODUCT WITH "LF" SUFFIX MEETS EUROPEAN UNION DIRECTIVES AND OTHER COUNTRY REGULATIONS AS DESCRIBED IN GS -22-008.  
4) THE HOUSING WILL WITHSTAND EXPOSURE TO 260 DEGREE PEAK TEMPERATURE FOR 10 SECONDS IN A WAVE SOLDER APPLICATION WITH A 1.6mm MINIMUM THICK CIRCUIT BOARD.

These hole are required when a shroud is used



RECOMMENED HOLE PATTERN  
COMPONENT SIDE  
FOR FEEDTHROUGH AND  
SOLDER TO BOARD.

mat'l. code		tolerances unless otherwise specified		CUSTOMER COPY		fci ELECTRONICS	
SEE NOTE 1.						www.fciconnect.com	
ltr	ecn no	dr	date	linear	projection	title	
A	H10290	DAN	910912			MINI COAX	
B	H10402	DAN	911229			S.T. MALE CONNECTOR	
C	H20755	DAN	921124	angles		product family	ETRAL(tm)
D	H40801	RVI	941208	dr	D Andrews	910912	code
E	H90489	HME	990816	leng	D Andrews	941208	213
F	pc05-0357	CLU	050927	chr	A v Zanten	910912	sheet
				app	H v Woensel	910912	1 of 1
sheet	revision	F				scale	5:1
index	sheet	1				size	A2
						dwg no	70243

PDM: Rev.F

STATUS: Released

Printed: Oct 23, 2007